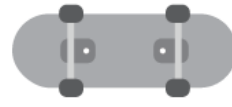


# SEVENTH



## THE YEAH...I KNOW PHASE

THE PHASE WHEN NOTHING YOU DO  
IS COOL, WHAT THEY FEEL RIGHT NOW  
MATTERS MOST, AND ONE SUDDENLY  
SOCIAL KID WANTS TO KNOW

"WHO'S GOING?"

THINKS LIKE  
AN ENGINEER

THEY CONSTRUCT NEW  
THOUGHTS & LEARN BEST  
BY TRIAL AND ERROR.

WANTS TO KNOW  
WHO  
AM I?

THE GOAL  
DISCOVER  
UNIQUENESS

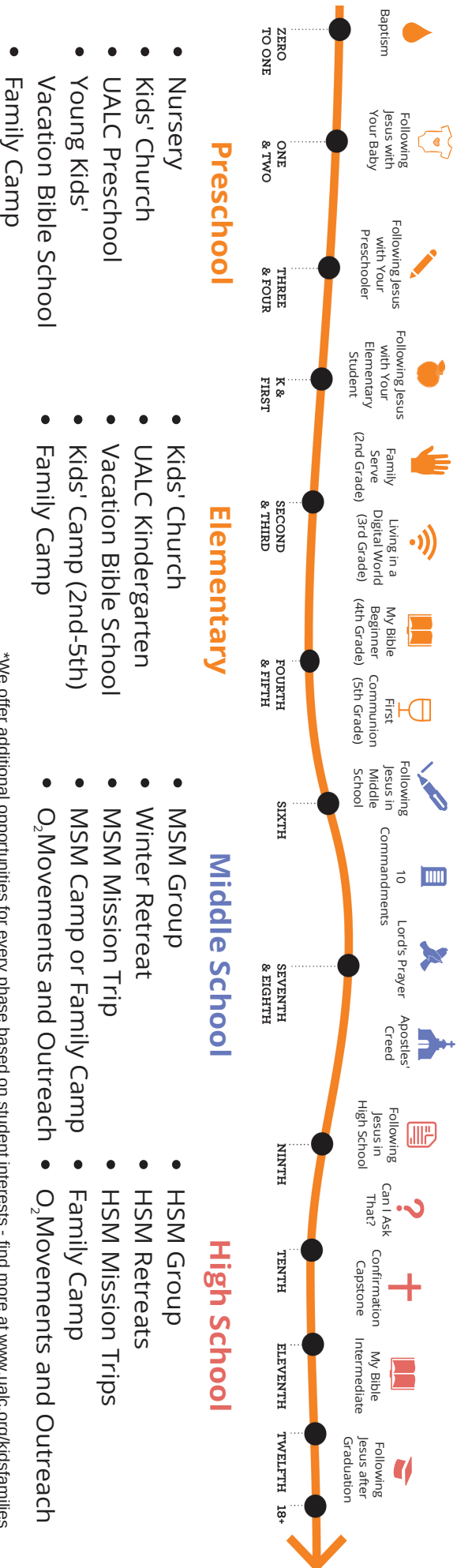
AFFIRM

THEIR PERSONAL JOURNEY  
SO THEY CAN OWN THEIR  
OWN FAITH AND VALUE  
A FAITH COMMUNITY

312 WEEKS AND COUNTING...

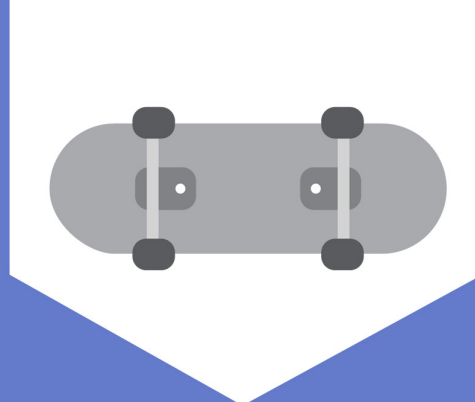
middle  
school  
ministry

## Discipleship for Every Phase from Birth to College



\*We offer additional opportunities for every phase based on student interests - find more at [www.ualc.org/kidsfamilies](http://www.ualc.org/kidsfamilies)

# OUR MISSION: TO BE AND TO MAKE DISCIPLES OF JESUS CHRIST



## SO WHAT IS A DISCIPLE?

When Jesus was asked which of the commandments was the most important he replied, "Love the Lord your God with all your heart and with all your soul and with all your mind and with all your strength. The second is this: Love your neighbor as yourself." Mark 12:29-31



**SOFT HEART** – EMOTIONAL



**ENGAGED MIND** – INTELLECTUAL



**OPEN HANDS** – PHYSICAL



**WHOLE SPIRIT** – ETERNAL

## IN SHORT...

A disciple is someone who has received God's incredible love and responds by loving Him with their entire life. We can't follow Jesus with just our head or heart. Instead, Jesus unites every aspect into a dynamic life that overflows to others!

Each phase of life has distinct opportunities for growth. Read on to see the ways UALC is ready to partner with your family for this specific phase and a lifetime of following Jesus.

## THE RHYTHMS OF YOUR WEEK SHAPE THE VALUES IN YOUR HOME.

### REFILL – WEEKLY:

**WORSHIP SERVICES**

SUNDAYS AT 9 AND 10:30 AM

**SUNDAY MORNING CONNECT**

**MSM (MIDDLE SCHOOL MINISTRY) GROUP**

SUNDAYS, 4:30 TO 6:30 PM AT MILL RUN

**CONNECT BEYOND SUNDAY**

TAE KWON DO



### POUR OUT – MONTHLY:

**HABITS AT HOME**

SERVE TOGETHER, FAITH CONVERSATIONS,  
PRAYER, A NETWORK OF MENTORS

**MINISTRY TEAMS**

VOLUNTEER WITH KIDS' CHURCH OR  
ANOTHER MINISTRY

**MSM LATE NIGHTERS**

**O<sub>2</sub> MOVEMENTS**



### EXPAND – ANNUALLY:

**MSM CAMP OR FAMILY CAMP**

**MSM MICRO MISSION**

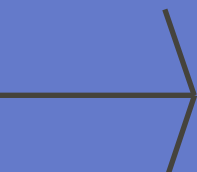
**MSM MISSION TRIP**

**WINTER RETREAT**

**LORD'S PRAYER WORKSHOP**



REGISTER ONLINE FOR WORKSHOPS AND  
PROGRAMS AT [WWW.UALC.ORG/MIDDLESCHOOL](http://WWW.UALC.ORG/MIDDLESCHOOL).



**UPPER ARLINGTON  
LUTHERAN CHURCH  
LYTHAM ROAD CAMPUS**  
2300 LYTHAM RD.  
COLUMBUS, OH 43220  
**MILL RUN CAMPUS**  
3500 MILL RUN DR.  
HILLIARD, OH 43026  
[WWW.UALC.ORG](http://WWW.UALC.ORG)